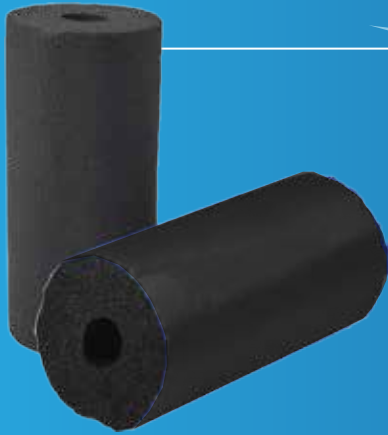




**VENTI**  
Air Products

## **VAFlex™**



is flexible closed cell elastomeric foam insulation from Venti Air Products – your source for HVAC and plumbing needs.

### **The advantages of VAFlex™ are**

- **Flexible Closed Cell Elastomeric Structure** - Flexible closed cell structure exhibits high resistance to the passage of water vapor.
- **Low thermal conductivity**
- **Superior Fire Performance** - 25/50 rated.
- **Chemically Resistant** - Resistant to fungi and vermin.
- **Eco Friendly** - No Ozone Depletion Potential and CFC Free.
- **Low Allergen** - Dust free and fiber free.
- **UV Resistant** - Made from UV resistant material for low to moderate UV exposure. For severe conditions, **VAShield™** is recommended.
- **Ease of installation** - Factory applied coating of powder on the inner wall speeds up the installation.
- **Versatile** - Can be used for Heating, AC, Refrigeration, Solar and Plumbing applications. Can be installed above and below ground.

### **The advantages of VAShield™ are**

- **UV protection** - VAShield™ offers 5 years UV protection.
- **Waterproof** - Protection from rain and severe weather.
- **Chemical Resistant** - Resistant to ordinary household chemicals.
- **Tear & Abrasion resistant** - It can provide some protection from mechanical damage.

### **VAShield™ is Cost Effective**

VAShield™ comes preinstalled from the factory. It can be more cost effective than other insulation coverings using tapes, wraps, or painting. This is simply an easier solution that saves on the material cost and labor.

### **VAShield™ Specification Compliance**

2015 IECC Section R403.4.1 (Residential)

2015 IECC Section 403.2.10.1 (Commercial)

2013 California Energy Code, Part 6 Subchapter 3, Section 120.3

### **Ease of Installation**

Please insure that pipe surface is clean and dry before installation. It is recommended that installation is done in ambient temperatures between 40°F and 105°F. Tubular insulation can be slipped over the pipe before it is connected. If the piping is already installed the insulation can be slit sideways for installation. All seams, joints and termination points should be sealed with an approved contact adhesive. The adhesive should be coated on both the contact surfaces.